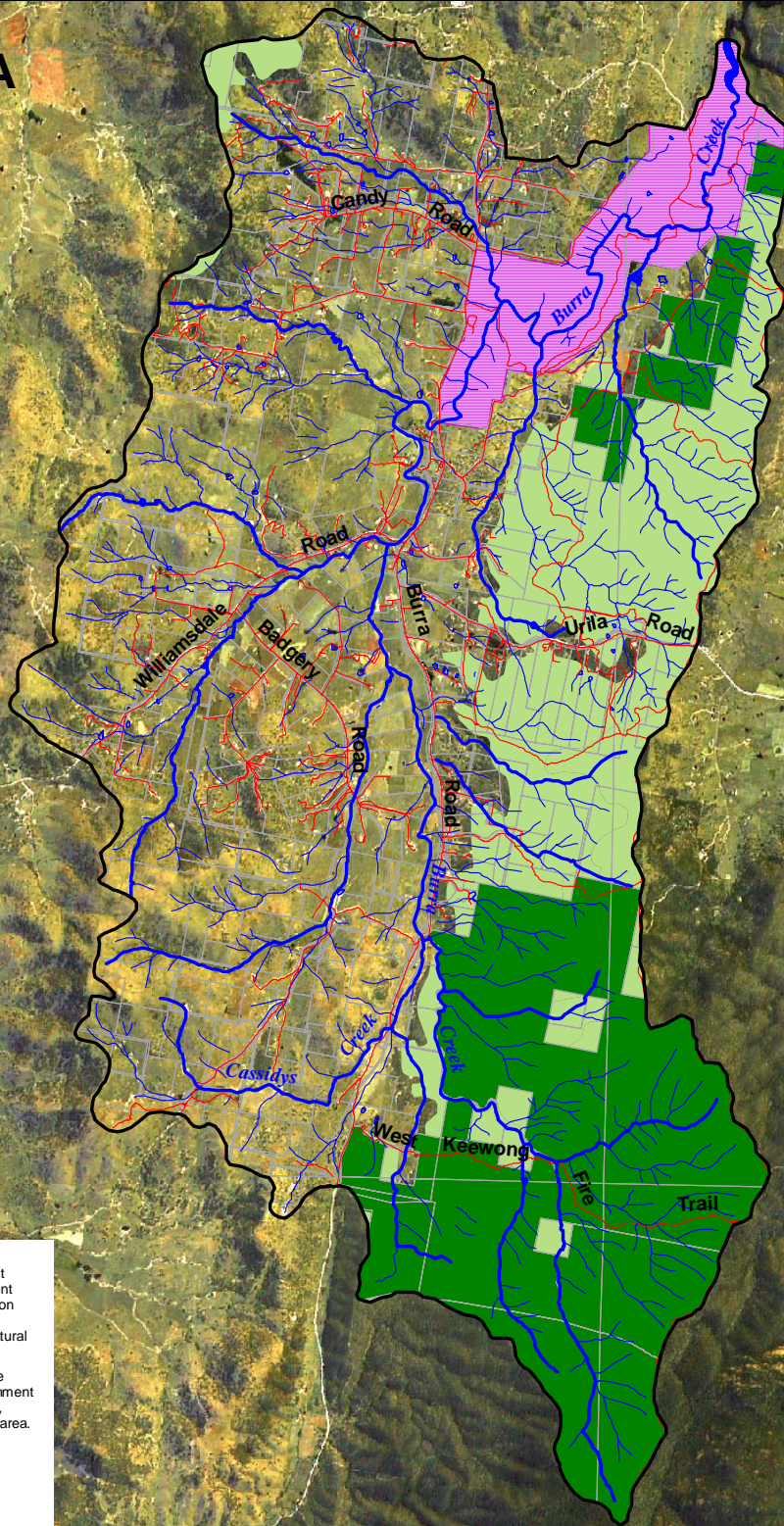


BURRA



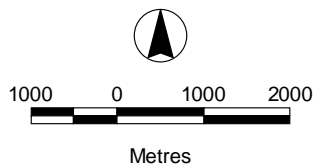
Notes:

Data courtesy of Environment ACT, Lands NSW, Department of Environment & Conservation and the Department of Infrastructure, Planning & Natural Resources.

* Land available to agriculture is equal to the total sub-catchment area less areas of tree cover, forestry, reserves and urban area.

Base Map

Area:	10,040 Ha
Roads:	188 kms
Streams:	370 kms
Agriculture:*	6,324 Ha
Tree Cover:	3,716 Ha
Urban:	0 Ha



- Sub-catchment boundary
- Road
- Major creek / river
- Creek / river
- Cadastre
- Vegetation cover
- Googong Foreshores
- National Park

