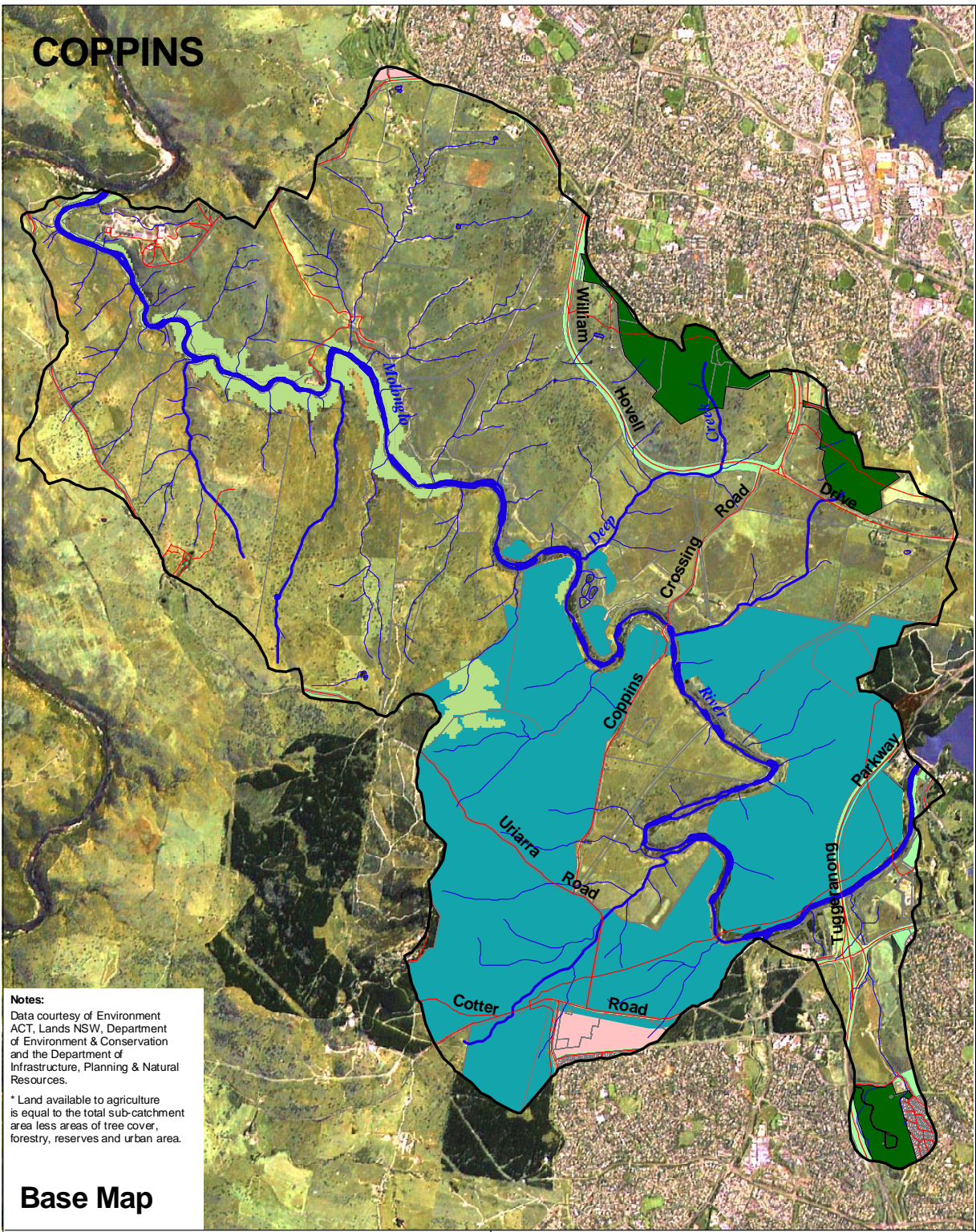


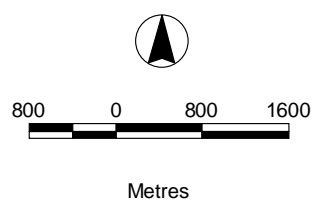
COPPINS



Notes:
 Data courtesy of Environment ACT, Lands NSW, Department of Environment & Conservation and the Department of Infrastructure, Planning & Natural Resources.
 * Land available to agriculture is equal to the total sub-catchment area less areas of tree cover, forestry, reserves and urban area.

Base Map

Area:	7,196 Ha
Roads:	70 kms
Streams:	254 kms
Agriculture*:	4,469 Ha
Tree Cover:	253 Ha
Urban:	89 Ha



- Sub-catchment boundary
- Road
- Major creek / river
- Creek / river
- Cadastre
- Vegetation cover
- ACT Forests
- Urban Open Space
- Canberra Nature Park
- Urban
- Native Grassland

