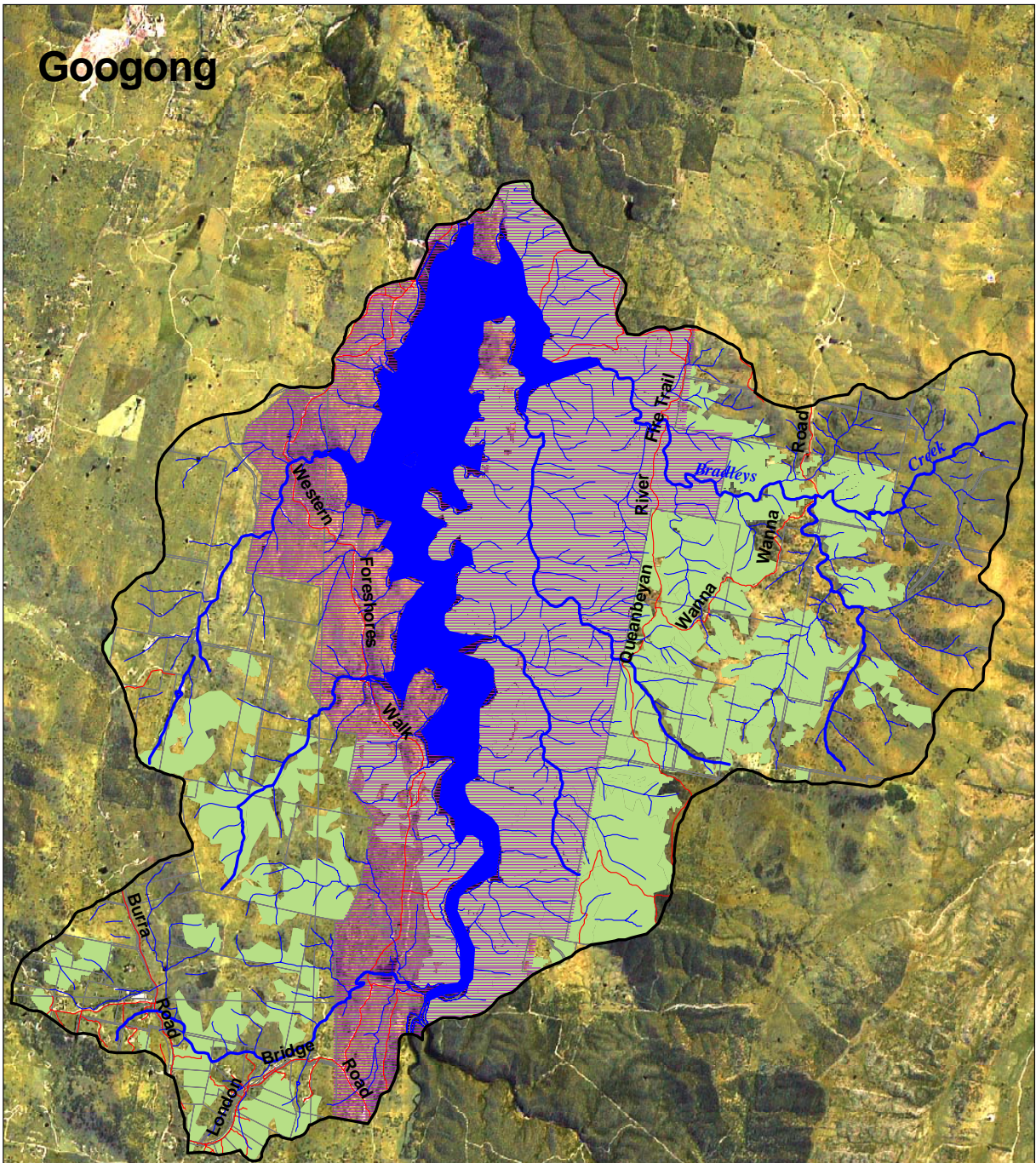


Googong



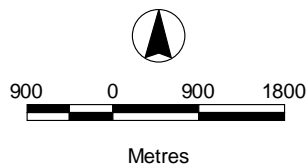
Base Map

Notes:

Data courtesy of Environment ACT, Lands NSW, Department of Environment & Conservation and the Department of Infrastructure, Planning & Natural Resources.

* Land available to agriculture is equal to the total sub-catchment area less areas of tree cover, forestry, reserves and urban area.

| | |
|---------------|----------|
| Area: | 7,352 Ha |
| Roads: | 52 kms |
| Streams: | 341 kms |
| Agriculture:* | 3,323 Ha |
| Tree Cover: | 4,029 Ha |
| Urban: | 0 Ha |



- Sub-catchment boundary
- Road
- Major creek / river
- Creek / river
- Cadastre
- Vegetation cover
- Googong Dam Foreshores

