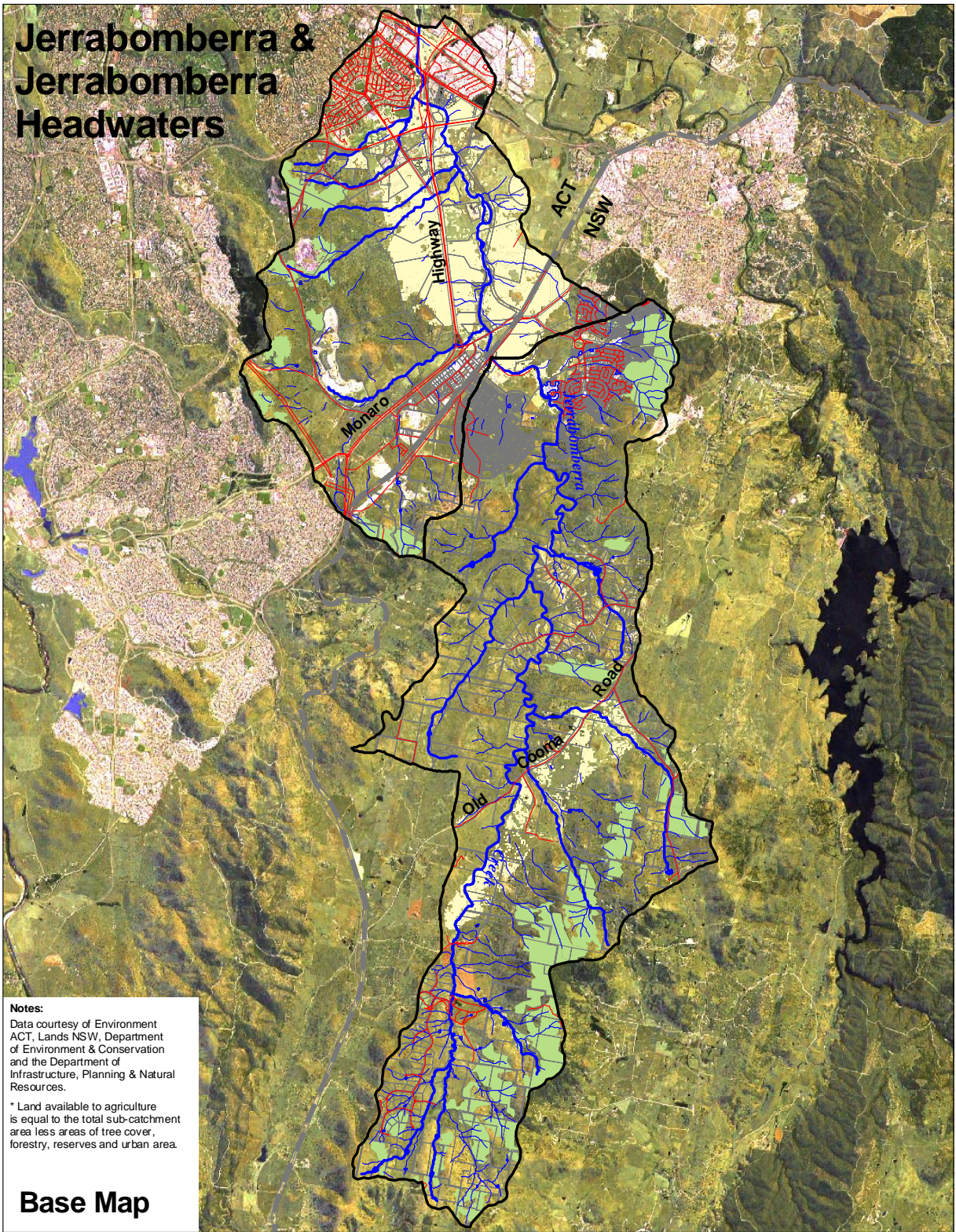


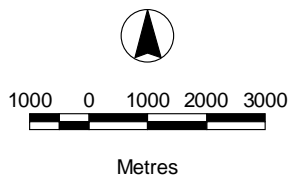
Jerrabomberra & Jerrabomberra Headwaters



Notes:
 Data courtesy of Environment ACT, Lands NSW, Department of Environment & Conservation and the Department of Infrastructure, Planning & Natural Resources.
 * Land available to agriculture is equal to the total sub-catchment area less areas of tree cover, forestry, reserves and urban area.

Base Map

Area:	12,840 Ha
Roads:	229 kms
Streams:	300 kms
Agriculture:*	9,459 Ha
Tree Cover:	2,043 Ha
Urban:	1,338 Ha



- Sub-catchment boundary
- Road
- Major creek / river
- Creek / river
- Cadastre
- Vegetation cover
- Native grassland
- Urban

