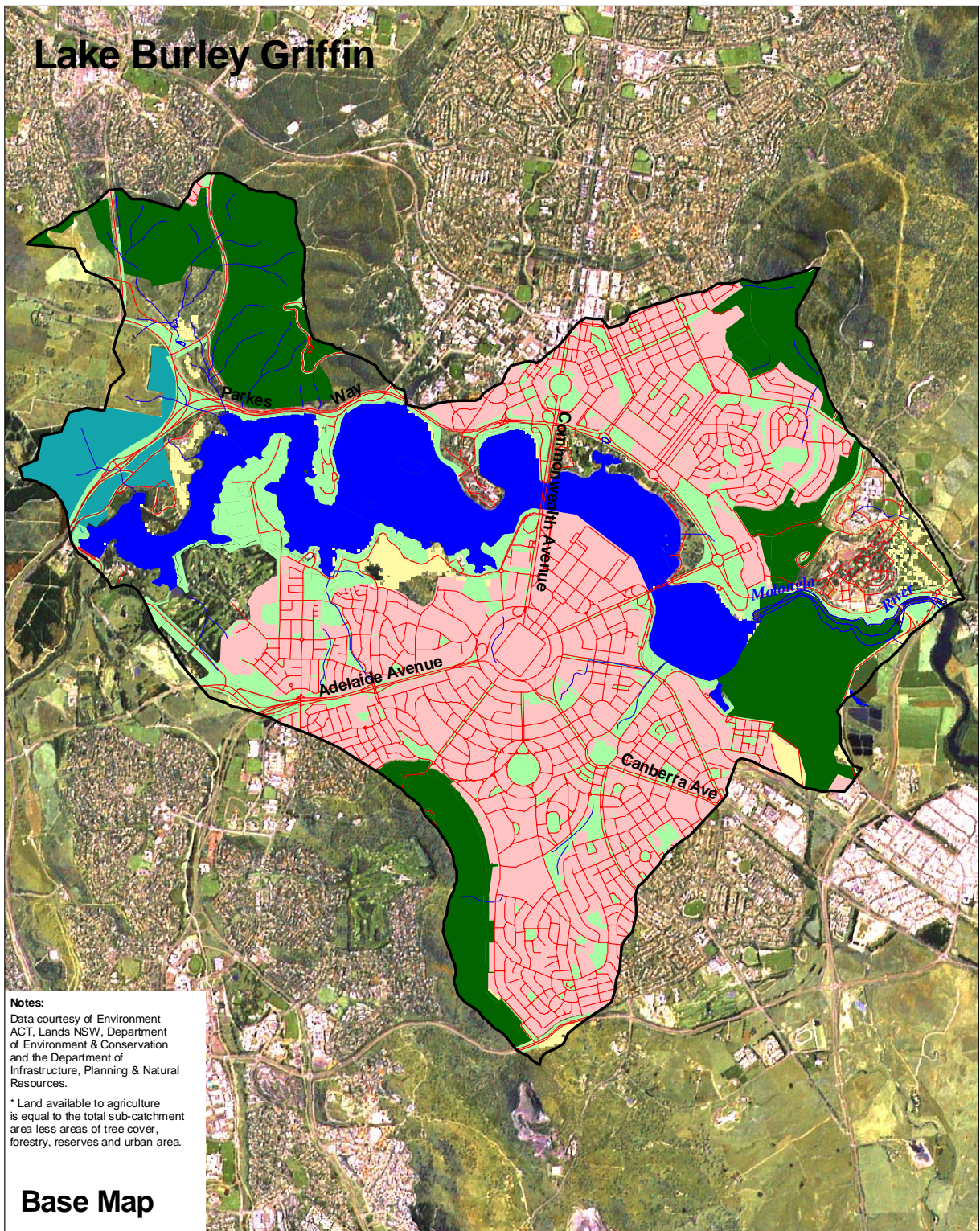


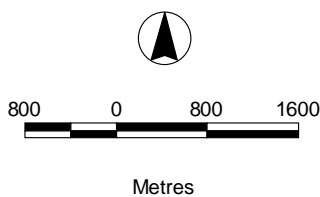
Lake Burley Griffin



Notes:
 Data courtesy of Environment ACT, Lands NSW, Department of Environment & Conservation and the Department of Infrastructure, Planning & Natural Resources.
 * Land available to agriculture is equal to the total sub-catchment area less areas of tree cover, forestry, reserves and urban area.

Base Map

Area:	4,873 Ha
Roads:	351 kms
Streams:	96 kms
Agriculture*:	40 Ha
Tree Cover:	623 Ha
Urban:	2,226 Ha



- Sub-catchment boundary
- Road
- Major creek / river
- Creek / river
- Cadastre
- Forestry
- Urban Open Space
- Canberra Nature Park
- Urban
- Native Grassland

