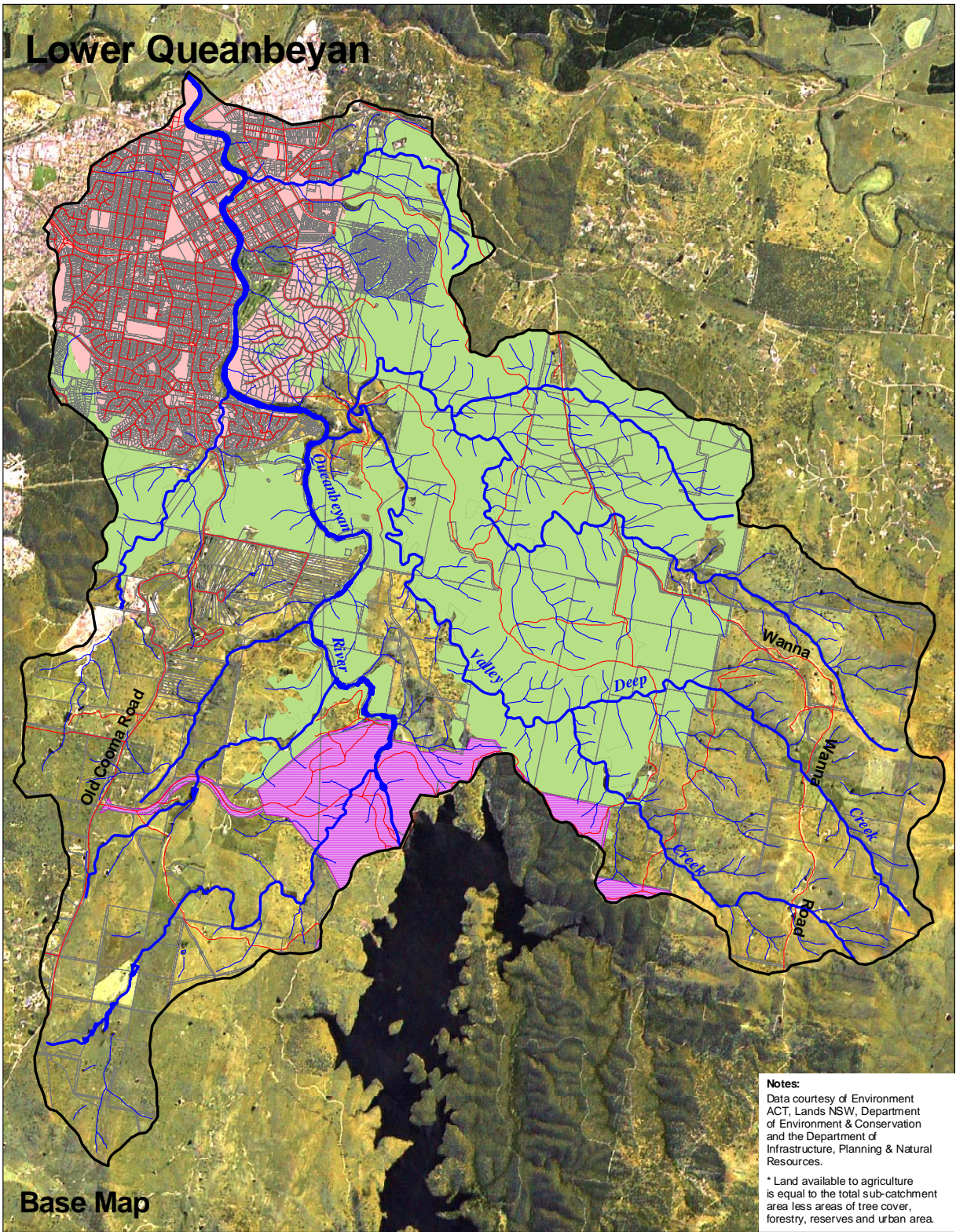


Lower Queanbeyan

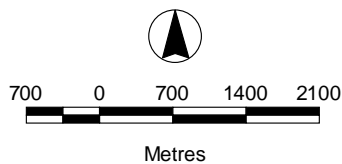


Base Map

Notes:
Data courtesy of Environment ACT, Lands NSW, Department of Environment & Conservation and the Department of Infrastructure, Planning & Natural Resources.

* Land available to agriculture is equal to the total sub-catchment area less areas of tree cover, forestry, reserves and urban area.

Area:	8,064 Ha
Roads:	194 kms
Streams:	293 kms
Agriculture:*	3,081 Ha
Tree Cover:	3,861 Ha
Urban:	1,122 Ha



- Sub-catchment boundary
- Road
- Major creek / river
- Creek / river
- Cadastre
- Vegetation cover
- Urban
- Googong resumed area
- Native Grassland

