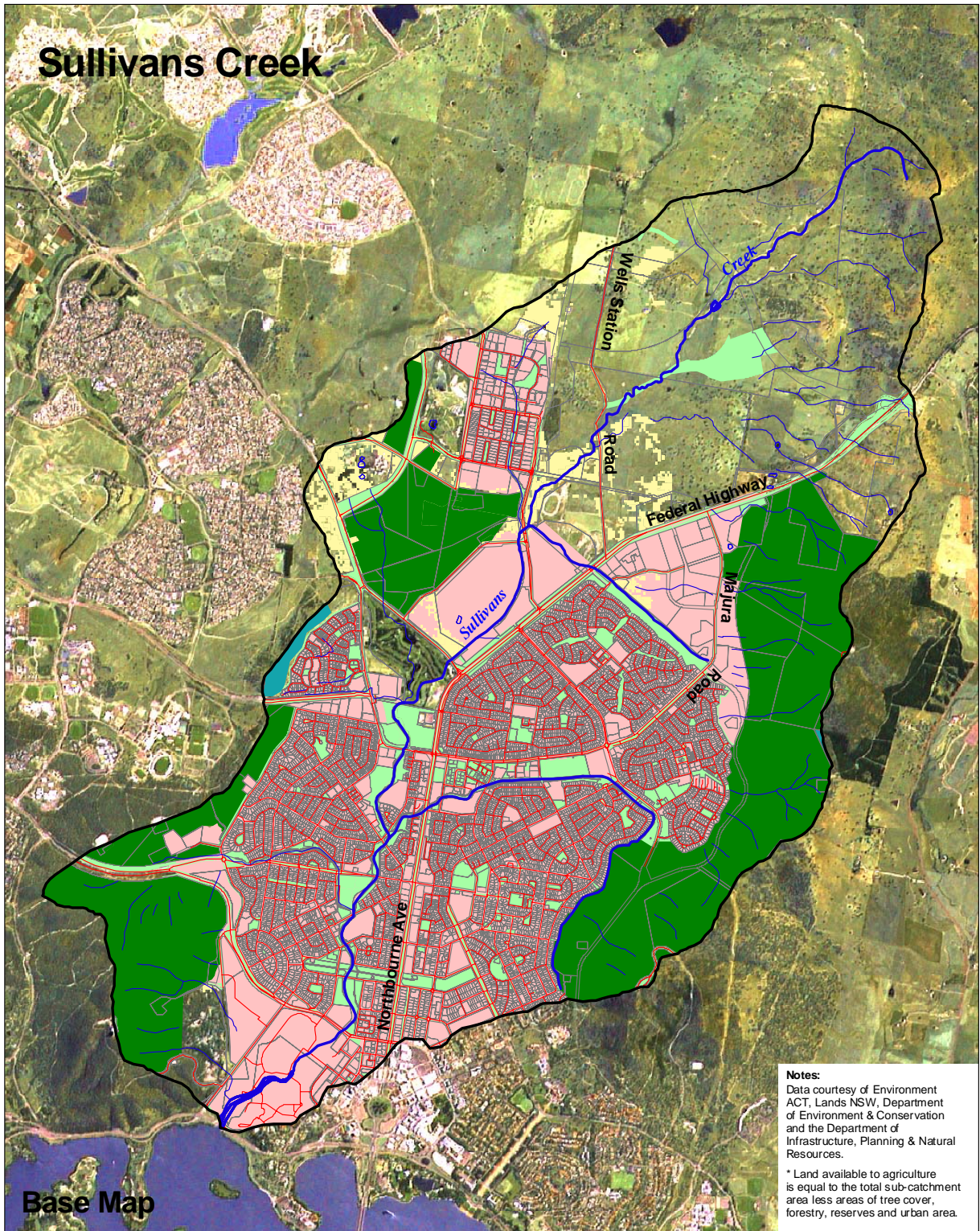


Sullivans Creek

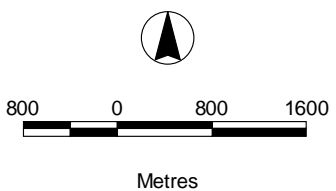


Base Map

Notes:
 Data courtesy of Environment ACT, Lands NSW, Department of Environment & Conservation and the Department of Infrastructure, Planning & Natural Resources.

* Land available to agriculture is equal to the total sub-catchment area less areas of tree cover, forestry, reserves and urban area.

Area:	5,232 Ha
Roads:	278 kms
Streams:	84 kms
Agriculture:*	1,109 Ha
Tree Cover:	1,082 Ha
Urban:	2,530 Ha



- Sub-catchment boundary
- Road
- Major creek / river
- Creek / river
- Cadastre
- ACT Forests
- Urban Open Space
- Canberra Nature Park
- Urban

