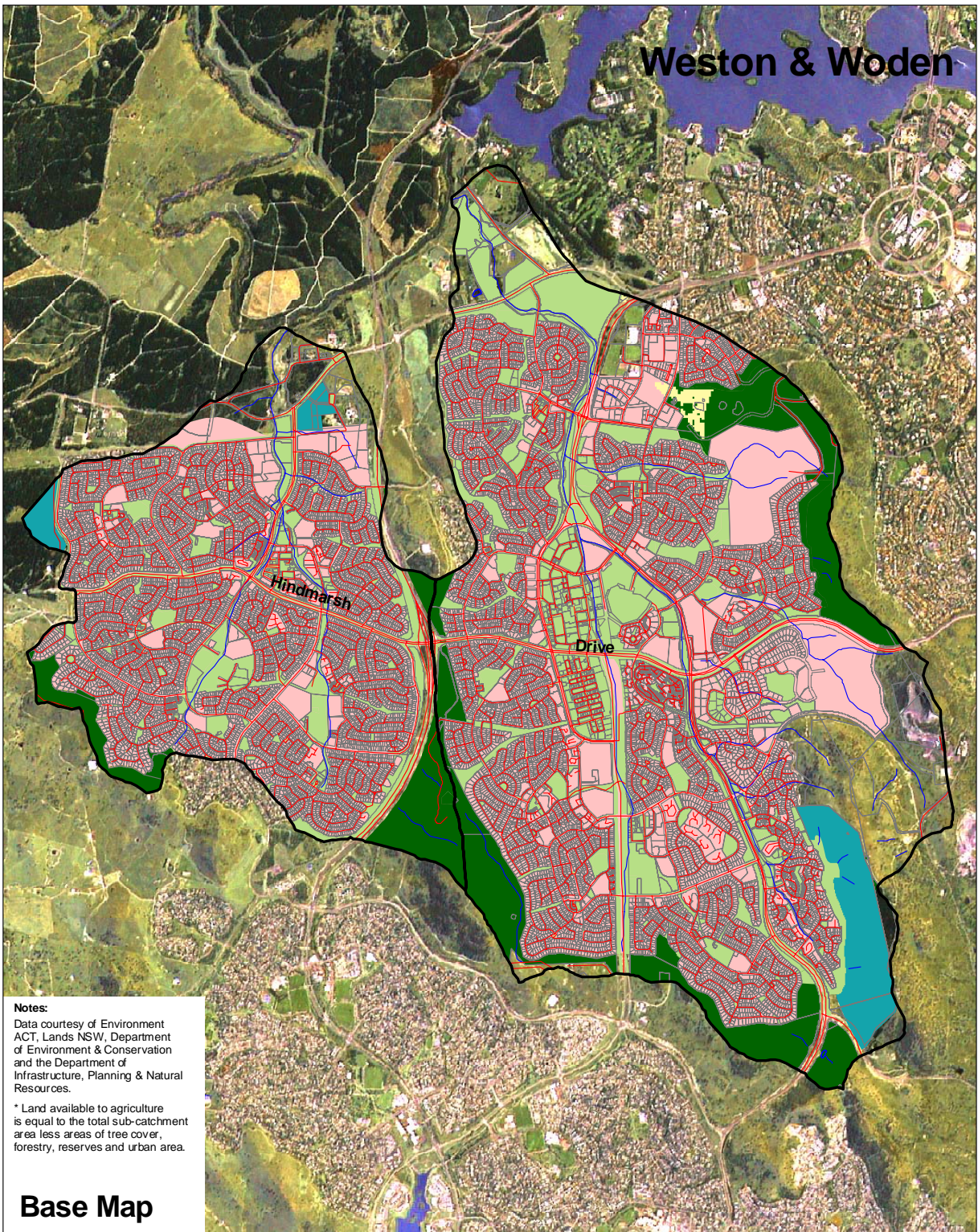


# Weston & Woden



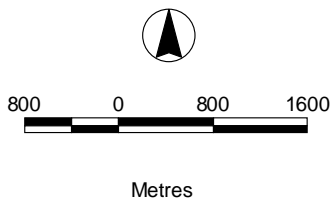
**Notes:**

Data courtesy of Environment ACT, Lands NSW, Department of Environment & Conservation and the Department of Infrastructure, Planning & Natural Resources.

\* Land available to agriculture is equal to the total sub-catchment area less areas of tree cover, forestry, reserves and urban area.

## Base Map

<b>Area:</b>	5,041 Ha
<b>Roads:</b>	449 kms
<b>Streams:</b>	46 kms
<b>Agriculture*:</b>	0 Ha
<b>Tree Cover:</b>	676 Ha
<b>Urban:</b>	3,721 Ha



- Sub-catchment boundary
- Road
- Major creek / river
- Creek / river
- Cadastre
- Native Grassland
- ACT Forests
- Urban Open Space
- Canberra Nature Park
- Urban

