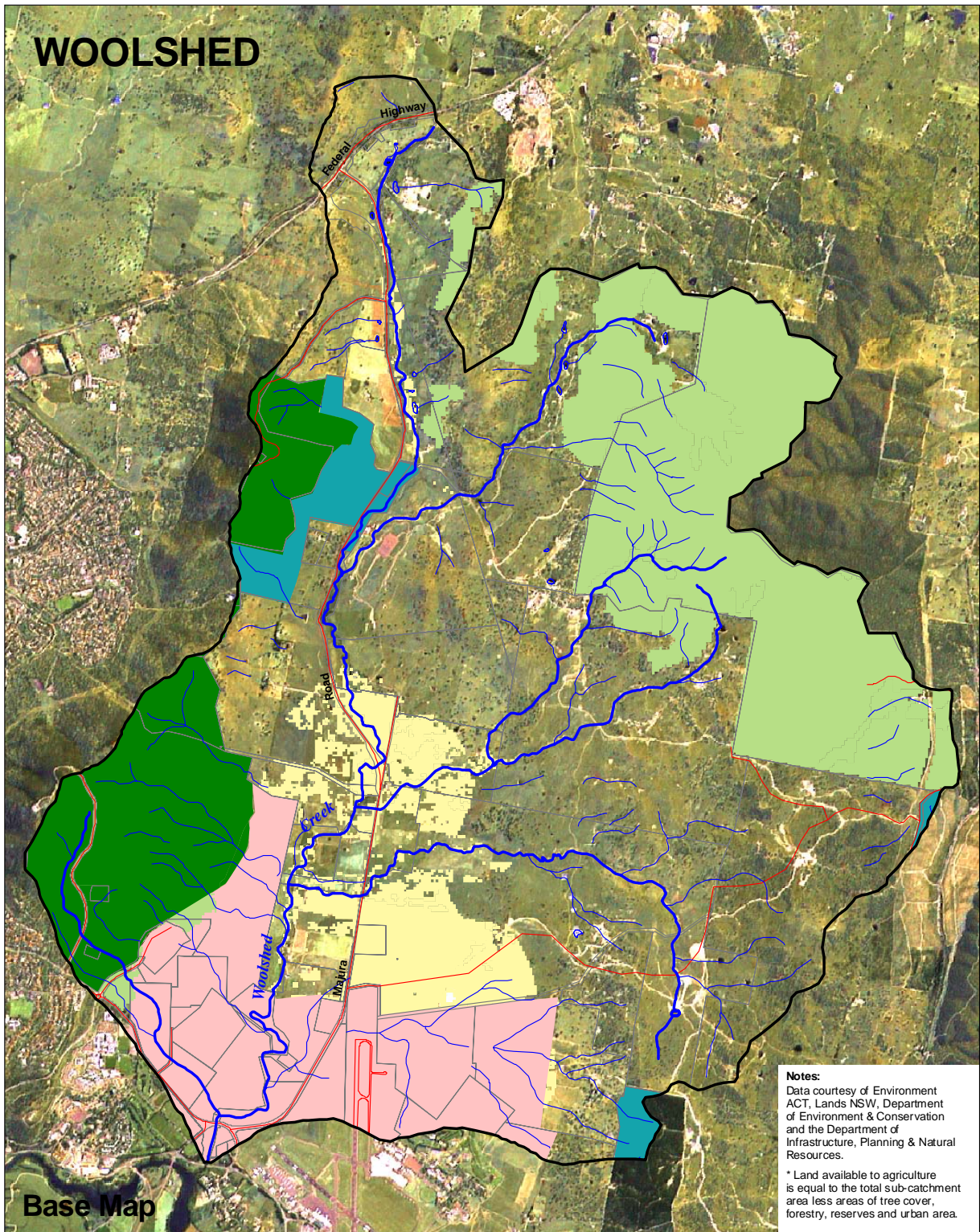


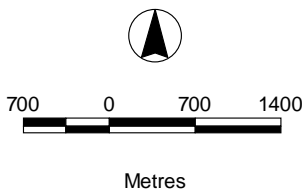
# WOOLSHED



**Notes:**  
 Data courtesy of Environment ACT, Lands NSW, Department of Environment & Conservation and the Department of Infrastructure, Planning & Natural Resources.

\* Land available to agriculture is equal to the total sub-catchment area less areas of tree cover, forestry, reserves and urban area.

<b>Area:</b>	6,112 Ha
<b>Roads:</b>	37 kms
<b>Streams:</b>	119 kms
<b>Agriculture:*</b>	3,302 Ha
<b>Tree Cover:</b>	2,085 Ha
<b>Urban:</b>	725 Ha



- Sub-catchment boundary
- Road
- Major creek / river
- Creek / river
- Cadastre
- Vegetation cover
- ACT Forests
- Canberra Nature Park
- Urban

