

## GETTING INVOLVED

### Landcare Personal Action Guide

#### *In your home*

- be careful what you put down the drain
- conserve water in the kitchen, laundry and bathroom and when washing the car
- conserve energy - use energy efficient appliances and turn lights off
- reduce your rubbish; buy reusable and recyclable products

#### *In your backyard*

- use garden chemicals wisely - follow the instructions on the product label
- plant local native shrubs and trees to provide habitats and corridors for wildlife, including pest-eating birds
- cover or mulch bare soil
- avoid overwatering your plants and avoid watering in the middle of the day
- return leaves and soil that gather along your paths to the garden or compost
- a compost heap or worm farm is the simplest, cheapest and easiest way to improve soil: use a compost heap to recycle grass clippings, leaves, prunings and a worm farm for kitchen scraps
- grow your own vegetables and herbs
- be considerate in what you do in your own backyard: your actions may have adverse effects elsewhere

#### *In your local area*

- discuss local landcare issues at school, with friends, and with local service and community groups
- get involved with your local community group or council to clean up rubbish and weeds
- find out what catchment you live in, its condition and ways to help improve it
- report dumping of lawn clippings and garden refuse in the bush they smother the bush and spread weeds
- keep pet cats and dogs out of bush areas, to help protect native fauna
- take a bag with you to collect rubbish when you are out walking
- get your school involved in a Landcare project (eg monitoring a local problem, like salinity or water quality)
- form a Landcare or Parkcare group to work with others on local issues

#### *In the wider community*

- use recreational vehicles responsibly - stick to formed tracks
- volunteer for Landcare activities - contact your local Landcare, Parkcare or Catchment group, Conservation Volunteers Australia or Greening Australia



Greening Australia



Greening Australia



Australian Government



#### Molonglo Catchment Group Inc.

The Molonglo Catchment Group is a non-profit community group of Landcare and Parkcare groups, other organisations and individuals managing natural resources in the Molonglo catchment. The group is supported by the ACT Government through the Australian Government's Natural Heritage Trust and National Action Plan for Salinity and Water Quality under the *Getting Equipped* program, another *Living Environment Project*. Additional support is provided by the Murrumbidgee Catchment Management Authority by locating the Coordinator in the CMA's Queanbeyan Office.

Phone: 6229 7715

Mobile: 0408 475 970

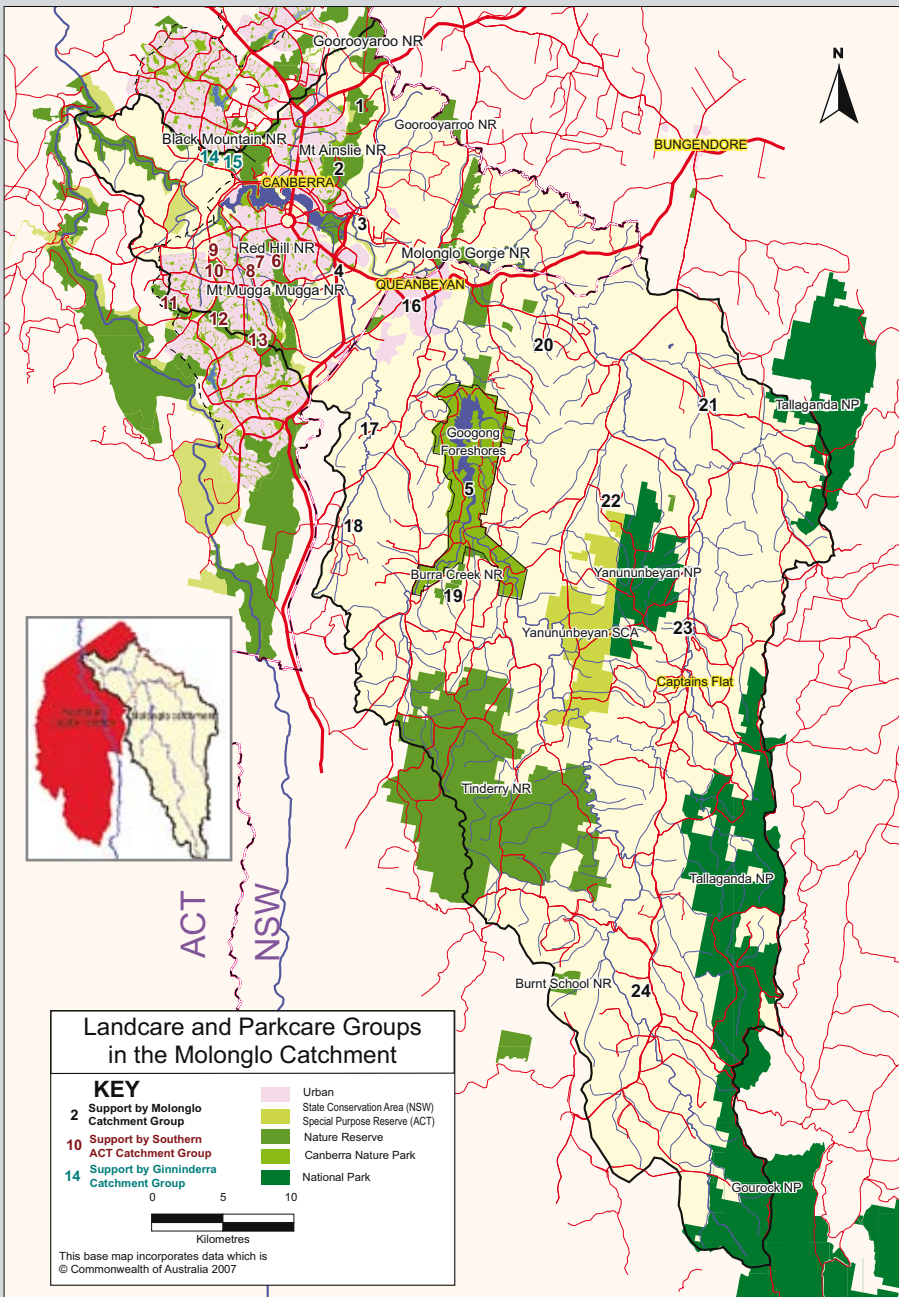
[coordinator@molonglocatchment.com.au](mailto:coordinator@molonglocatchment.com.au)

[www.molonglocatchment.com.au](http://www.molonglocatchment.com.au)

PO Box 1573 Fyshwick ACT 2609

# Getting involved

## Landcare and Parkcare Groups in the Molonglo Catchment



### Landcare and Parkcare Groups in the Molonglo Catchment

Support by the Molonglo Catchment Group  
 Support by the Southern ACT Catchment Group  
 Support by the Ginninderra Catchment Group

#### ACT Groups:

1.	Friends of Mt Majura
2.	Mt Ainslie Weeders
3.	Pialligo Brook Landcare
4.	Narrabundah/Jerrabomberra Landcare
5.	Friends of Googong
6.	Red Hill Regenerators
7.	Garran / Hughes Landcare
8.	Friends of Hughes Buffer Area Open Space
9.	Friends of Oakey Hill Parkcare
10.	Illoura Horse Owners Group
11.	Coolman Ridge Parkcare
12.	Mt Taylor Parkcare
13.	Farrer Ridge Parkcare
14.	Friends of Mt Painter Parkcare
15.	Friends of Aranda Bushland

#### NSW Groups:

16.	Queanbeyan Landcare
17.	Fernleigh Park Landcare
18.	Royalla Landcare
19.	Burra Landcare
20.	Carwoola Landcare
21.	Hoskinstown Landcare
22.	Carwoola Landcare (Primrose Valley sub-group)
23.	Captains Flat Landcare
24.	Jerangle / Upper Queanbeyan Landcare

#### Some useful contacts: Telephone (Area Code 02)

ACT	
Other catchment groups:	
Ginninderra	6278 3309
Southern ACT	6296 6400
ACT Landcare	6205 2913

#### Beyond

Landcare Online	www.landcareonline.com
UMCCC*	6207 2999
Murrumbidgee CMA	6229 7700
Conservation Volunteers Aust.	6247 7770
Greening Aust.	6253 3035

Full details (incl. email & websites) at  
[www.actlandcare.org.au](http://www.actlandcare.org.au)

\*Upper-Murrumbidgee Catchment Coordinating Committee

## What is Landcare/Parkcare?

Landcare / Parkcare is about community and government working together, to reduce land and water degradation to develop sustainable land use. Our environment is naturally fragile and damages easily. Sustainable land use helps keep our land and water healthy and productive, so we don't risk

- loss of plant and animal species and habitats
- a decline in soil and water quality and quantity, leading to losses in agricultural production

### Why should I care?

We all depend on the land for the food we eat, the water we drink, the clothes we wear, and our housing and recreation

needs. We all need to work together to care for our land, to maintain our standard of living and to keep food costs down.

### How can I support Landcare / Parkcare?

- support the rural and urban community through understanding soil, water and habitat problems and challenges
- sponsor a Landcare project through Landcare Australia Limited (it's tax deductible)
- donate to the Landcare Australia Foundation for a Landcare project in your State or Territory.