

Do You Know The Conservation Value of Your Revegetation Site?

Guidelines for collecting seed for revegetation in ACT and surrounding region

What Conservation Value does your site have?

To determine where you need to source seed it is important to know the conservation value of the site identified for revegetation works. The ACT has been classified into four categories based on the conservation values:

1. High Conservation Value (HCV)
2. Moderate Conservation Value (MCV)
3. Low Conservation Value (LCV)
4. Minimal Conservation Value (MinCV)

This document defines each conservation value and recommends where seed should be collected.

For sites with a High or Moderate Conservation Value it is recommended that seed be collected from the same sub catchment or major sub catchment, or similar vegetation community, soil type or altitude. The maps in this document provide information to assist in determining the appropriate seed collection range depending on the conservation value of the site.

The short and long-term success of revegetation will depend on the genetic quality of the seed used. It is therefore critical that seed sourced for revegetation for all conservation value sites be collected from large (> 100–200 plants), healthy populations.



Seed collector harvesting *Cassinia longifolia* at Mt Ainslie, ACT.

Helpful tips

- 1 It is recommended that the first approach to revegetation is to allow natural regeneration.
- 2 In all sites it is important that seed for revegetation is collected from large, healthy stands of vegetation located as close to the revegetation area as possible.
- 3 For species where there is a shortage of local seed from large, healthy populations, seed should be collected from the nearest stand of healthy vegetation or an alternative species used.
- 4 These guidelines should be used in conjunction with the Florabank Guidelines and Code of Practice.



Harvesting *Allocasuarina verticillata*



Are you revegetating in or near a High Conservation Value site?

What is a High Conservation Value (HCV) site?

HCV site includes:

- Vegetation communities that are relatively intact or have not been badly degraded under other land uses.
- The various storeys of vegetation remain even if there is evidence of some impact.
- A high native flora and fauna component is usually present.
- Weeds are relatively few or include species that are either innocuous or easy to manage.
- Useful and functional habitat is present, especially for threatened species.
- Moderate conservation value areas where they can be enhanced and which are located in strategic positions (e.g. wild life corridors). (Source: Butler G, 2005)

Where do I collect seed for a High Conservation Value (HCV) site?

For revegetation projects in or near HCV sites it is recommended that seed is collected within the sub-catchment from a similar vegetation community, soil type and altitude. If this is not possible, collect seed from the closest equivalent vegetation community, soil type and altitude from the adjoining sub-catchment (see maps on page 2). ***Within these areas it is critical to collect from healthy stands of vegetation and collect from as many individuals as possible.***

Example:

To revegetate a HCV lowland community in the Sullivans Catchment seed should be collected from the same vegetation community in the Sullivans Catchment. If seed is not available from this catchment, seed should be collected from a similar vegetation community, soil type and altitude in Woolshed or Lower Molonglo or Ginninderra Catchments.



Volunteers collecting seed from Eucalyptus blakelyi and recording provenance

What catchment is my revegetation site in?

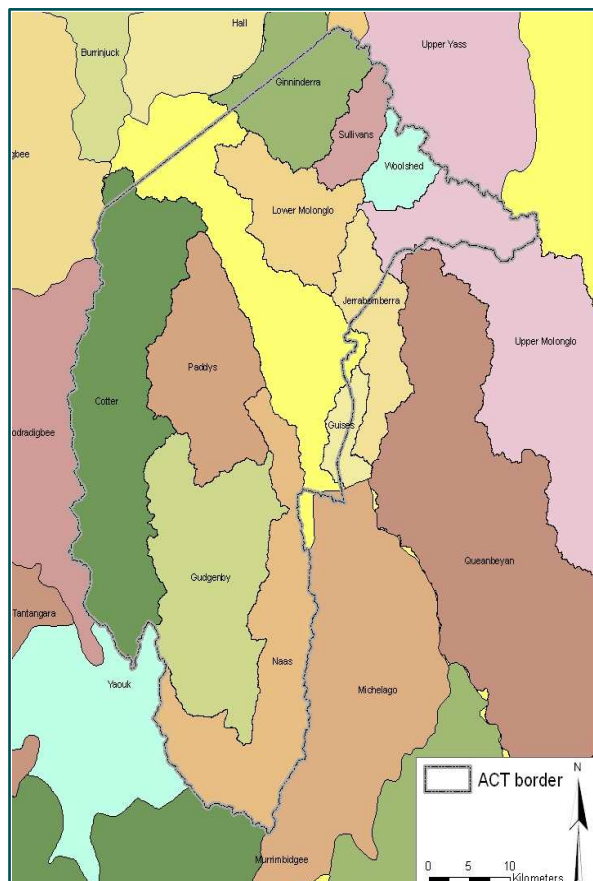
Map 1. Displays the sub catchment boundaries in the ACT and surrounding region

What soil type is my revegetation site on?

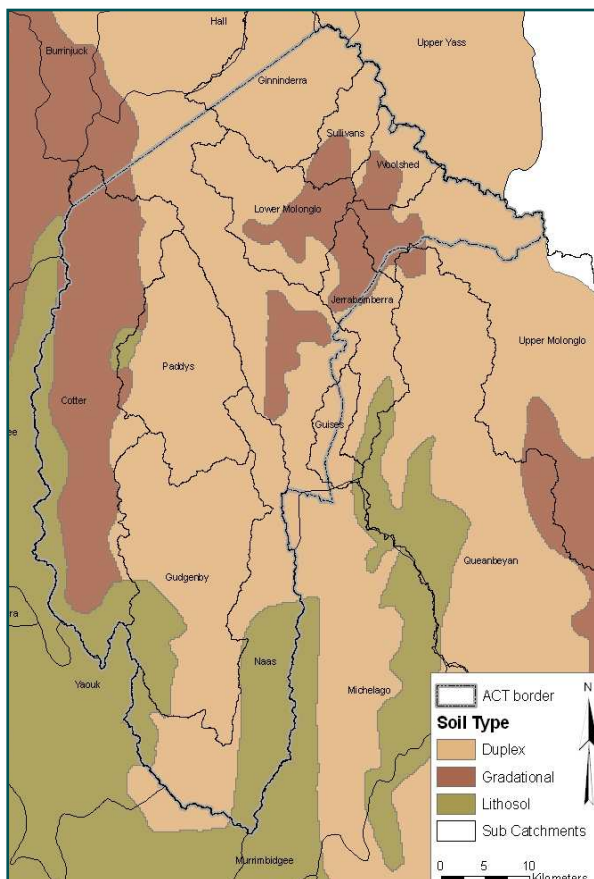
Map 2. Displays the sub catchments boundaries and broad soil types of the ACT and surrounding region

What vegetation community is my revegetation site in or near?

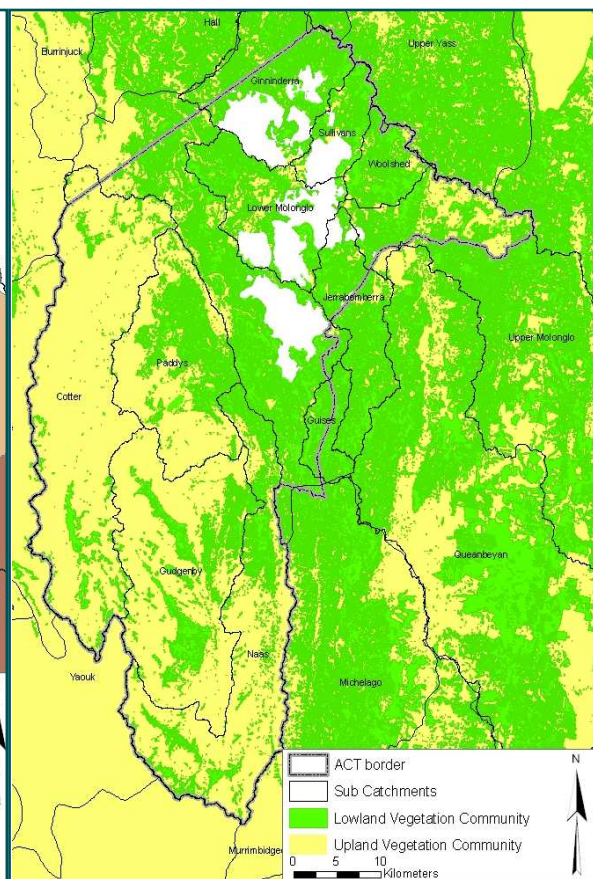
Map 3. Displays the sub catchment boundaries and vegetation communities based on altitude (Upland and Lowland communities)



Map 1. Sub catchments



Map 2. Soil types



Map 3. Lowland and upland vegetation communities

Are you revegetating in or near a Moderate Conservation Value site?

What is a Moderate Conservation Value (MCV) site?

MCV site includes:

- Vegetation types where there may have been some level of human induced impacts through infrastructure construction, intensive grazing or similar disturbances, but reasonable native species diversity still occurs. Weeds are present, and may include severe weed infestations where management is required.
- Some strata of vegetation may have been reduced or removed, but recreation of a landscape type or continuity of habitat between other areas is feasible and may be required as part of longer term planning requirements. (Source: Butler G, 2005)

Where do I collect seed for a Moderate Conservation Value (MCV) site?

For revegetation projects in or near MCV sites it is recommended that seed is collected within the major sub-catchments and from a similar vegetation community. If this is not possible, then collect seed from the closest equivalent vegetation community in an adjoining Catchment (see maps on page 4).

Example:

To revegetate a MCV lowland community in Sullivans Catchment seed should be collected from the same vegetation community in the Molonglo Catchment. If seed is not available from this Catchment, seed should be collected from the closest equivalent vegetation community in the Ginninderra or Southern ACT or Yass Catchment.



Land manager harvesting Eucalyptus blakelyi seed

What catchment is my revegetation site in?

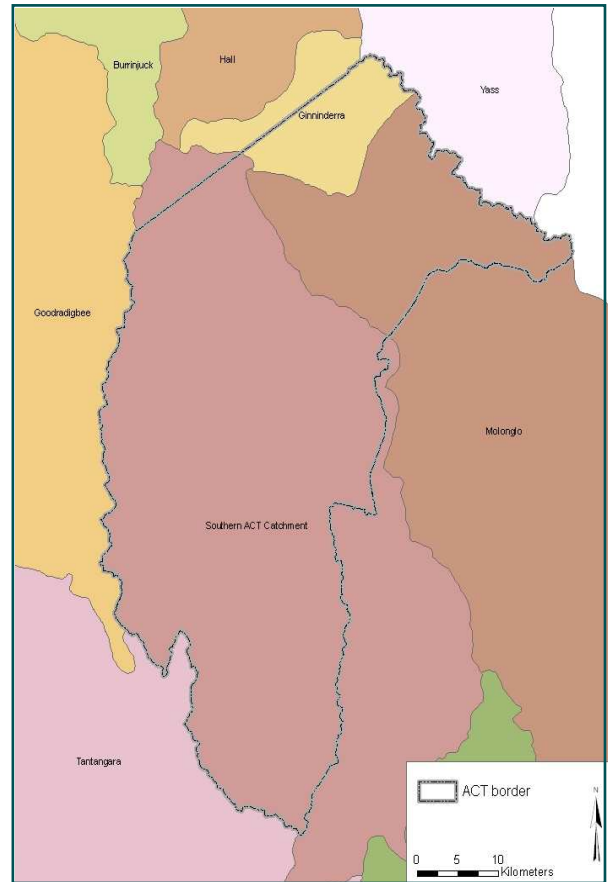
Map 1. Displays the major sub catchment boundaries in the ACT and surrounding region

What soil type is my revegetation site on?

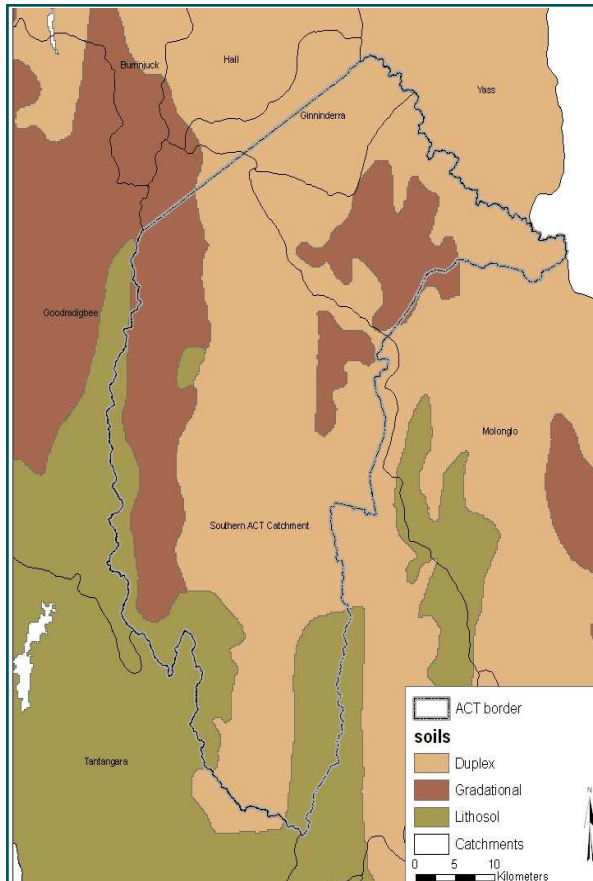
Map 2. Displays the major sub catchments boundaries and broad soil types of the ACT and surrounding region

What vegetation community is my revegetation site in or near?

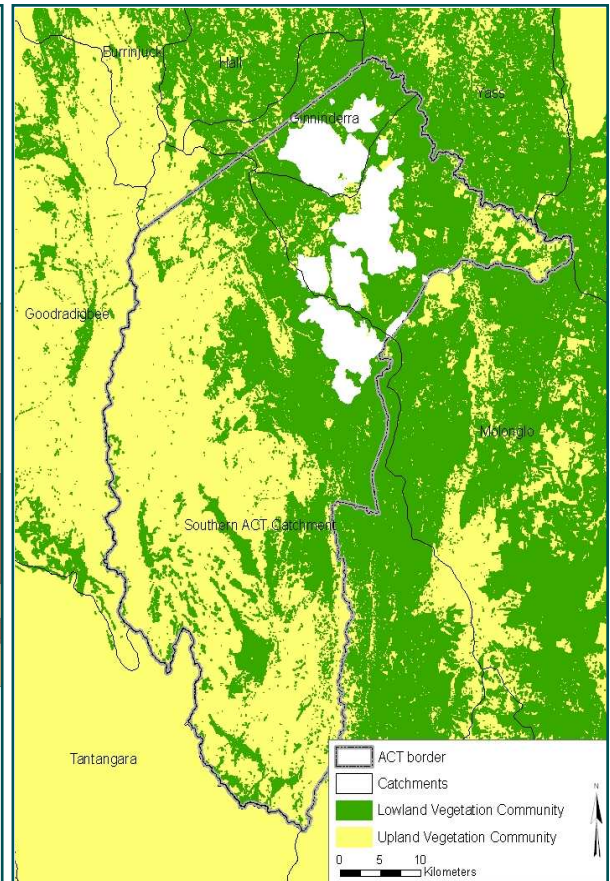
Map 3. Displays the major sub catchment boundaries and vegetation communities based on altitude (Upland and Lowland communities)



Map 1. Major Sub catchments



Map 2. Soil types



Map 3. Lowland and upland vegetation communities

Are you revegetating in or near a Low Conservation Value site?

What is a Low Conservation Value (LCV) site?

LCV includes:

- Locations where human impacts have been severe.
- Native species may still be present, but are usually scattered, isolated or in low numbers.
- Weeds are common and many species may require management.
- There may be remnant patches of bushland left but these will be in a degraded state.
- Restoration to an original form might be difficult and expensive (basically a conversion) and may be of limited value to biodiversity, but these sites may have high values in combination with other restoration projects.

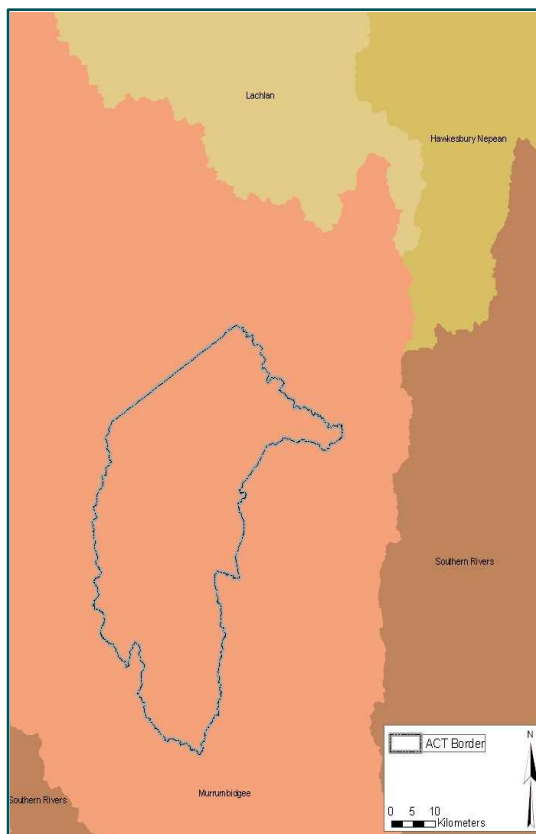
(Source: Butler G, 2005)

Where do I collect seed for a Low Conservation Value (LCV) site?

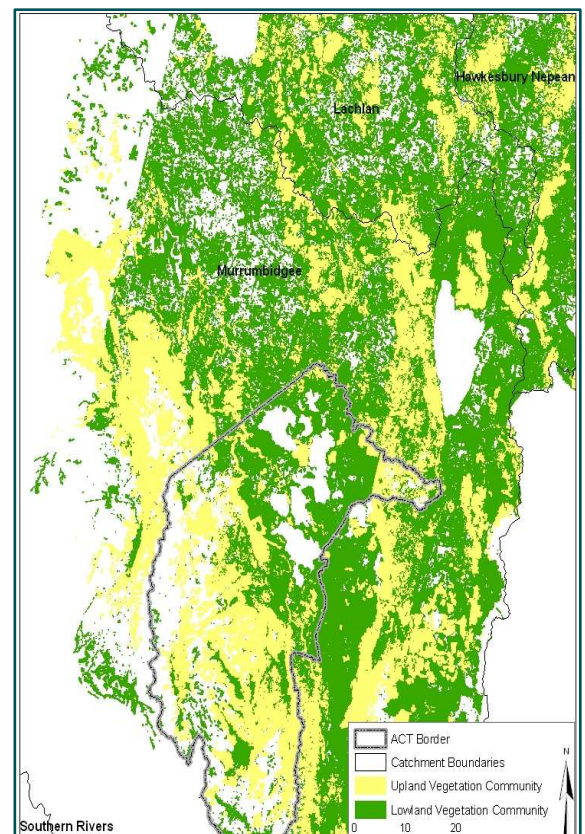
For revegetation projects in or near LCV sites it is recommended that seed is collected within the Catchment. The ACT is included in the Murrumbidgee Catchment. If this is not possible, collect seed from the nearest adjoining Catchment. In LCV sites revegetation may be used to enhance general habitat values.

Example:

To revegetate a LCV lowland community in Sullivans Catchment seed should be collected from the Murrumbidgee Catchment. If this seed is unavailable, collect seed from the nearest remnant in the Lachlan or Hawkesbury Nepean or Southern Rivers Catchment with similar habitat.



Map 1. Regional catchments



Map 2. Lowland and upland vegetation communities

Are you revegetating in or near a Minimal Conservation Value site?

What is a Minimal Conservation Value (MinCV) site?

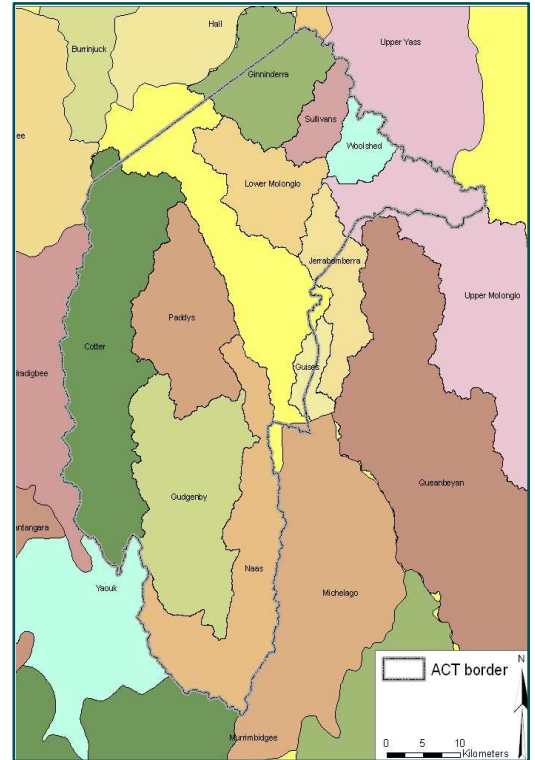
MinCV areas have little to no existing (conservation) values, and/or are isolated from other areas of value (Source: Butler G, 2005).

Where do I collect seed for a Minimal Conservation Value (MinCV) site?

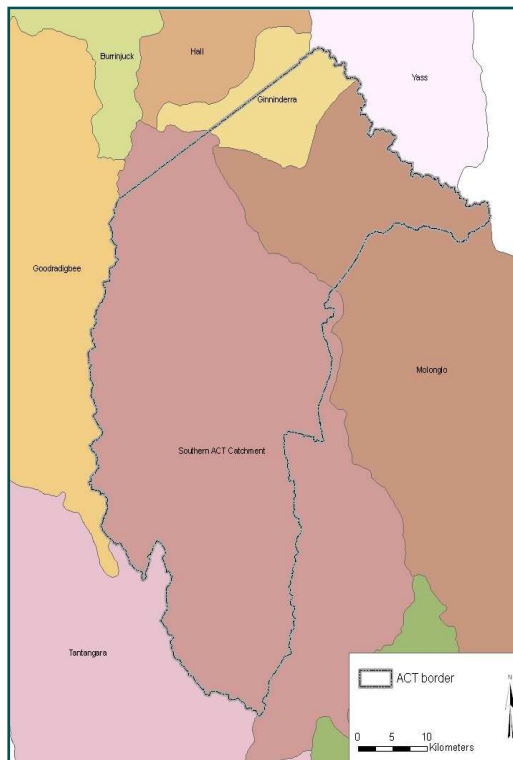
For MinCV sites there are no limits from where seed should be collected from. However, it is encouraged that local seed is used where possible. Planting may be undertaken to provide habitat values for native species.



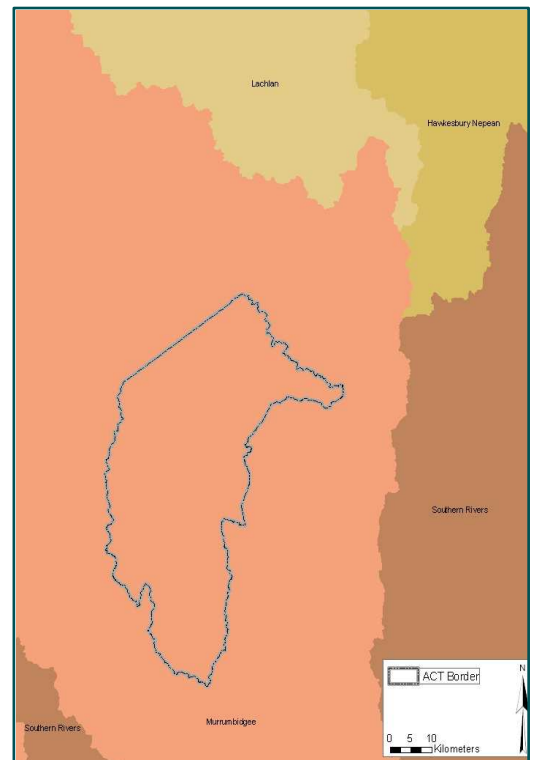
Eucalyptus seed



Map 1. Sub Catchment Collection Range



Map 2. Catchment Collection Range



Map 3. Regional Catchment Collection Range

If you would like more information on these guidelines contact:

Contact Greening Australia Capital Region
(02) 6253 3035

For more information visit the following websites:

www.greeningaustralia.org.au
www.florabank.org.au
www.tams.act.gov.au

Acknowledgment:

The following groups have contributed to the development of guidelines for collecting seed for vegetation in the ACT:

CSIRO Plant Industry
Parks, Conservation and Lands
Australian National Botanic Gardens
Australian Tree Seed Centre
Lachlan Catchment Management Authority

Greening Australia Capital Region
Southern ACT Catchment Group
Greening Australia Limited
Geoff Butler & Associates

Maps created by Greening Australia Capital Region, all mapping data supplied by the Department of Territory and Municipal Services, part of the ACT Government



Seed collectors harvesting Allocasuarina verticillata

Produced by Greening Australia Capital Region October 2008