

WEED ALERT

Mexican Feather Grass

(Nassella tenuissima) Family Poaceae



Mexican feather grass is a densely tufted perennial grass, almost identical to serrated tussock.

The invasive weed, Mexican feather grass has been discovered in the ACT.

Mexican feather grass (MFG) has the potential to invade pastures and native grasslands in the ACT. If uncontrolled, it could spread to other states of Australia. Overseas, it is highly invasive and has formed monocultures, smothering desirable species. Importation into Australia is prohibited.

Description

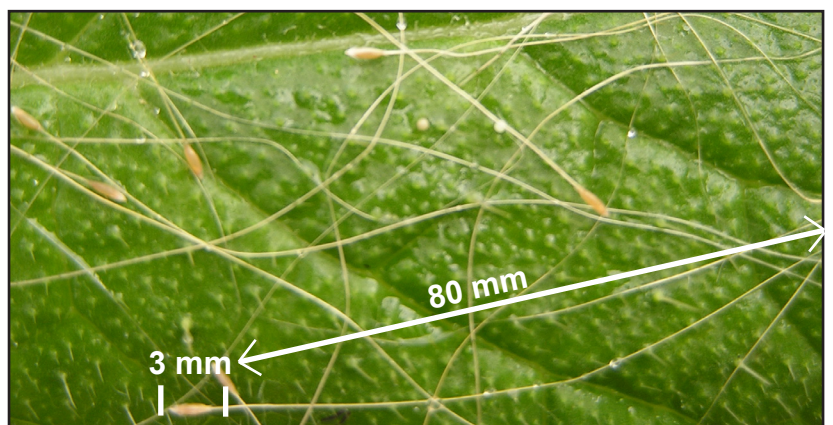
MFG produces more seed than the related invasive weed, serrated tussock and is a slightly taller plant (leaves to about 60 cm long and flower spikes to 70 cm). The leaves are very similar to serrated tussock. The seed is similar to the seed of native stipa grasses. The awn or bristle-like attachment to the seed is 4.5-9 cm long. The seed itself is 2-3 mm long (see photo right). MFG flowers from mid spring to summer.

Contact

Any person who thinks they have spotted this weed, please contact Canberra Connect on 13 22 81.

Further Information

Website: www.weeds.org.au



Close up of seed (with awns) on a thistle leaf.

